

OPENEVENT



the british
psychological society
promoting excellence in psychology

PARKSTONE GRAMMAR SCHOOL

For entry in September 2022



WHAT IS PSYCHOLOGY?

Psychology is the study of mind and behaviour. It encompasses the biological influences, social pressures, and environmental factors that affect how people think, act, and feel.

STUDENTS LEARN BEST IF TAUGHT IN A WAY THAT MATCHES THEIR LEARNING STYLE.

1

2 PEOPLE WITH SCHIZOPHRENIA HAVE MULTIPLE PERSONALITIES

5

MOST PEOPLE ONLY USE 10% OF THEIR BRAIN

3

YOUR HANDWRITING GIVES AWAY INFORMATION ABOUT YOUR PERSONALITY.

4 LOW SELF-ESTEEM IS THE MAIN CAUSE OF PSYCHOLOGICAL PROBLEMS

10 PSYCHOLOGY MYTHS

6

AUTISM IS CAUSED BY DISTURBED MIRROR NEURONS

7 SOME PEOPLE ARE LEFT BRAINED AND OTHERS ARE RIGHT BRAINED

8

PSYCHOLOGISTS CAN READ MINDS AND BODY LANGUAGE

9 MEN'S AND WOMEN'S BRAINS ARE DIFFERENT

10

DYSLEXIA IS ONLY ABOUT REVERSING LETTERS

TYPES OF PSYCHOLOGY

Psychology is a broad and diverse field. The following are some of the major areas of research and application within psychology.

Abnormal psychology

Biopsychology

Clinical psychology

Cognitive psychology

Comparative psychology

Developmental psychology

Educational psychology

Environmental psychology

Forensic psychology

Health psychology

Organisational psychology

Personality psychology

Social psychology

Sports psychology

MYTHS ABOUT STUDYING

PSYCHOLOGY

PSYCHOLOGY IS EASY

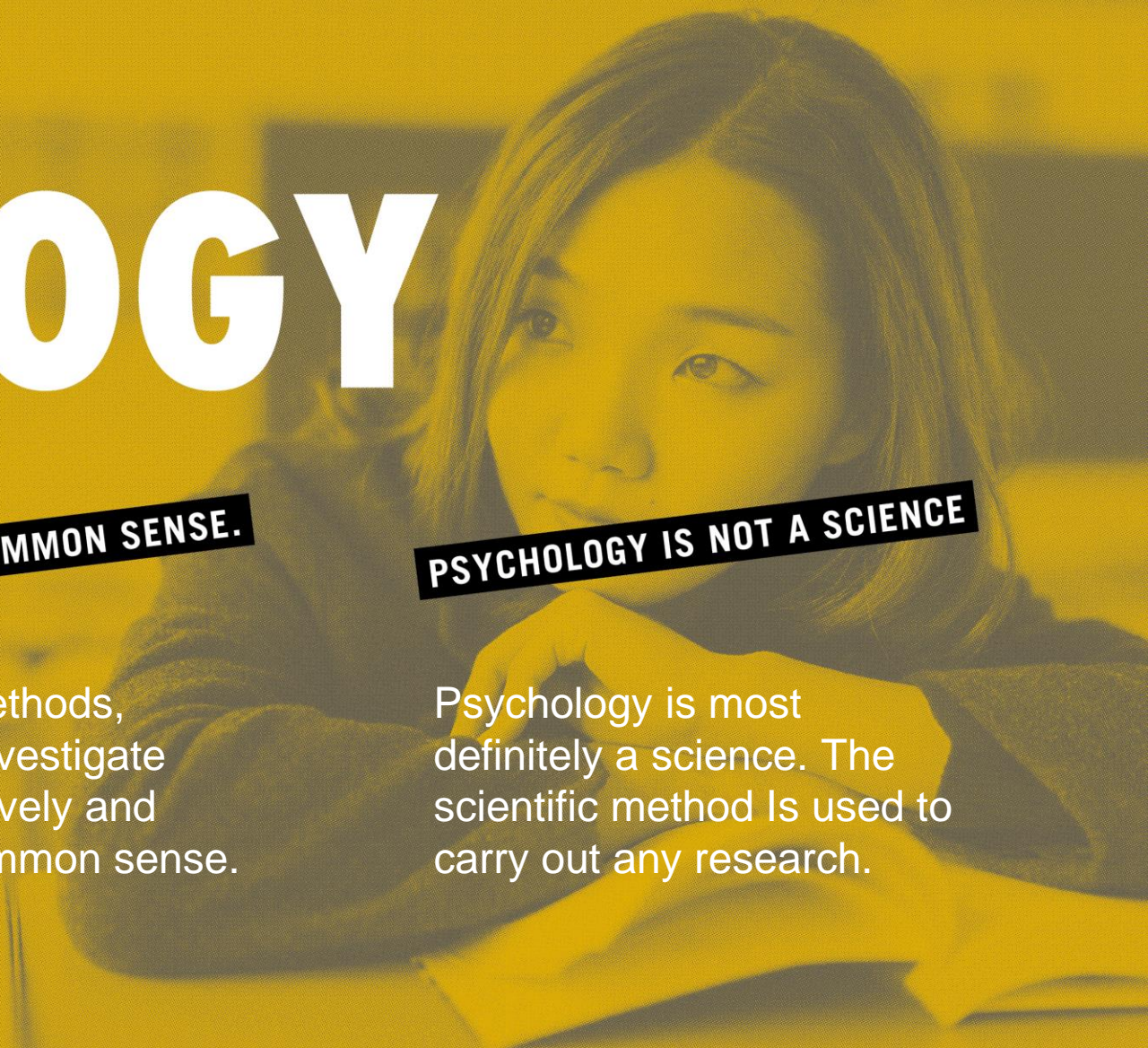
No psychology is not easy. It is just as hard as any other A Level subject.

PSYCHOLOGY IS JUST COMMON SENSE.

By using scientific methods, experimenters can investigate human issues objectively and sometimes refute common sense.

PSYCHOLOGY IS NOT A SCIENCE

Psychology is most definitely a science. The scientific method is used to carry out any research.



WHY STUDY PSYCHOLOGY

Psychology develops engaged, scientifically literate citizens who are socially, culturally and ethically aware

PSYCHOLOGY IS EXCITING.

It is fascinating and can even be fun!

Psychology was the 3rd most popular A Level in 2019 across the country

Studying psychology can help you:

Understand yourself

Understand the behaviour of people around you

Develop your critical thinking skills

Develop your grasp of science and research methods

Improve your employability

Complement your other A Level subjects

Gain an insight into mental illness

PSYCHOLOGY TEACHING FACILITIES AT

Parkstone Grammar School



PSY 1



PSY 2

PSYCHOLOGY TEACHING TEAM

The department has three members of staff:

- Miss James (Head of Department)
- Mrs Hilton-Meredith
- Mrs Wingrove

All members of staff work part time or work across two departments but have more than 65yrs of teaching experience between them!



TOPICS STUDENTS WILL STUDY HERE IN THE SIXTH FORM

We follow the AQA syllabus and study the following topics:



Those marked with a * are studied in year 13.

[Link to specification on AQA website](https://www.aqa.org.uk/subjects/psychology/as-and-a-level/psychology-7181-7182/subject-content-a-level)
OR
<https://www.aqa.org.uk/subjects/psychology/as-and-a-level/psychology-7181-7182/subject-content-a-level>

MATHS IN PSYCHOLOGY

There is Maths in Psychology

Why?

Psychology is a science requiring knowledge of how to do scientific research.

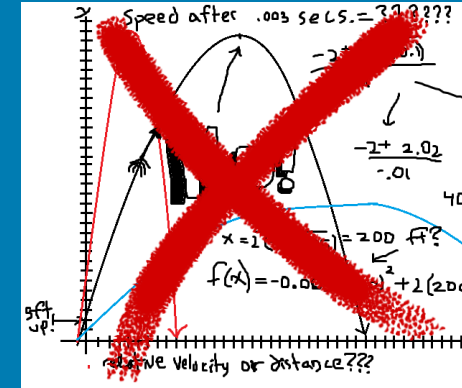
Maths is essential so that you can PRESENT & ANALYSE DATA from research!

At least 10% of the marks in the Psychology A-levels require the use of mathematical skills.

These skills will be at least the standard of higher tier GCSE mathematics.



Don't panic ... if you don't like maths!
It isn't more algebra or calculus!



Maths skills will be applied in the context of A-level Psychology.

You will mostly be learning about statistical concepts and techniques needed to make sense of data.

These will include topics like drawing graphs, means, modes and medians, calculating percentages & normal and skewed distributions¹⁰

WHAT IS THE ASSESSMENT LIKE?

- A Level Psychology with AQA consists of 3 exam papers
- Each paper is 2hrs long and worth 96 marks. Questions vary in length from 1-16marks

Paper One	Paper Two	Paper Three
<ul style="list-style-type: none">• Social Influence• Memory• Attachment• Psychopathology	<ul style="list-style-type: none">• Approaches• Biopsychology• Research Methods	<ul style="list-style-type: none">• Issues & Debates• Relationships• Stress• Forensic Psychology

- Exam style questions are practiced throughout the course, often under exam conditions.

PSYCHOLOGY COMPLIMENTS OTHER A LEVEL SUBJECTS

Students who study A Level Psychology take it alongside a variety of other subjects from Art to Drama, Maths to Biology. However, it combines well with the following subjects as different areas of psychology involve a range of topics including:

RP

Biology

Business

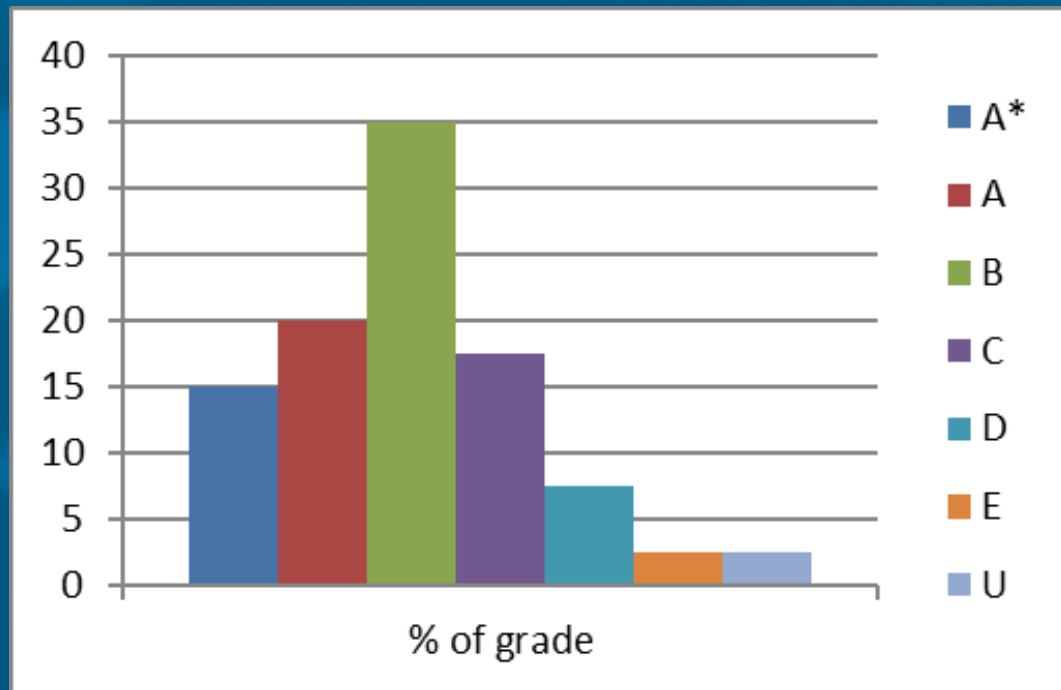
Sociology

So, studying psychology can help you to develop understanding of your other A Level subjects.


A LEVEL PSYCHOLOGY RESULTS FOR

Parkstone Grammar School

Results for 2019



Exam results
from the last
set of external
exams

A young woman with long brown hair, wearing a yellow sweater, is smiling and holding several books. She is in a classroom or study area with other people in the background. The text 'What do students think about studying Psychology at A Level?' is overlaid on the right side of the image.

What do
students
think about
studying
Psychology
at A Level?

HERE ARE SOME ANSWERS FROM YR13 TO SOME OF THE QUESTIONS YOU MIGHT ASK THEM:

- **What do you enjoy most about psychology lessons?**
 - Always something new and different
 - Hard concepts but always interesting and fun to learn about.
 - I enjoy debating the different sides of a topic and hearing everyone's point of view.

- **What's the most interesting topic you've studied so far?**
 - Attachment
 - Psychopathology
 - Biopsychology

- **What are other psychology students like?**
 - Very nice and friendly. Also motivate you to work hard.

- **Will I enjoy lessons or will they be boring?**
 - Yes, for the most part there are active things to do and a lot of interactive activities. Sometimes just copy notes but that's not all the time
 - The lessons are easy to work in, most of the time they are very interactive.
 - Most lessons are interesting and engaging , however it depends on the topic as you will like some topics more than others.

- **How easy is it to get extra help if I'm finding it difficult?**
 - Very easy to ask for help and always useful resources given
 - Very easy, teachers are always willing to help and can give you extra support if you don't understand a topic.
 - The teachers are approachable and easy to ask for help from.
- **What aspects of the work have you found most difficult?**
 - The amount of content is a bit overwhelming at first but it's actually all manageable and can be understood well.
 - Research methods (maths & statistics) can be quite hard
 - Lots of evaluation points to remember
- **What has surprised you most about studying psychology at A Level?**
 - How interesting it is and how much content there is – lots of topics in detail
 - The amount of transferrable and research skills involved in every topic. You develop the skills to constantly pick apart research claims using methodological/ethical considerations and comparisons

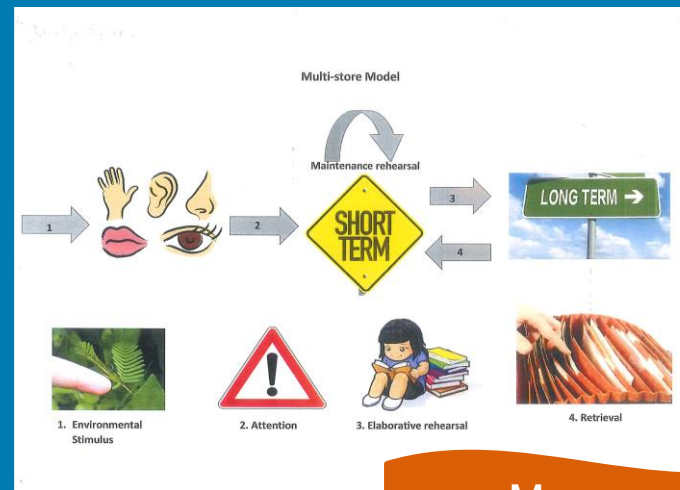
WHAT ARE PSYCHOLOGY LESSONS AT

Parkstone Grammar School

REALLY LIKE?

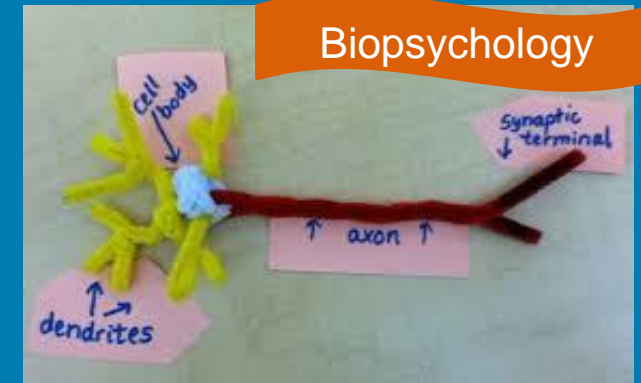
Teaching and learning can take a number of formats, although all encourage independent study skills, in preparation for higher education. Lessons may involve:

- Note-taking
- Discussion
- Small group work
- Use of film clips to illustrate and explain concepts
- Practical work
- Interactive activities
- Assessments



Memory

Biopsychology



THE CASE OF CLIVE WEARING

<https://www.youtube.com/watch?v=Vwigmktix2Y&t=14s>

THE EXPECTED REQUIREMENTS OF

Parkstone Grammar School

In order to enter the sixth form, students are required to have achieved six GCSEs (including Mathematics and English Language) at grades C/5 or above.

In addition, to study Psychology, you will need to have achieved a grade C/5 or above in any Science and have a particular interest in Biology as a number of topics include a biological element.

You do not need to have studied Psychology prior to A Level.

CAREERS IN PSYCHOLOGY

Clinical

Clinical Psychologist - A brief interview with clinical psychologist and business consultant, Hamira Riaz. https://www.youtube.com/watch?v=e8rVVb_XvUc&feature=youtu.be

Health

Educational

Teacher, Lecturer, Educational Psychologist - A brief interview with educational psychologist, Dan O' Hare. <https://www.youtube.com/watch?v=UDQAfovz69c&feature=youtu.be>

Forensic

Prison Psychologist, Forensic Psychologist - A short interview with registered and chartered Forensic Psychologist, Veronica Warn. <https://www.youtube.com/watch?v=gBNPGLDZ3JE&feature=youtu.be>

Research and teaching

Spotlight in Careers – Occupational Psychology
<https://www.youtube.com/watch?v=QTUUskpxrks&list=PLCkLQOAPOT2ATuX2Kz0tApFp-UUFwllZ&index=2>

Occupational

Psychology Careers – Counselling.
<https://www.youtube.com/watch?v=g9hGN9VcWW8&list=PLCkLQOAPOT2ATuX2Kz0tApFp-UUFwllZ&index=19>

Counselling

Neuropsychology

Psychology Careers – Neuropsychology. <https://www.youtube.com/watch?v=k0U-0VY6YVw&list=PLCkLQOAPOT2ATuX2Kz0tApFp-UUFwllZ&index=10>

Sport and exercise

Sports Psychologist - A brief interview with business and sport psychologist, Steven Sylvester. <https://www.youtube.com/watch?v=icD3kr31F58&feature=youtu.be>

CAREERS WHERE PSYCHOLOGY IS USEFUL

Art therapist

Social worker

Consumer psychology

Human resources

Aviation psychology

Engineering psychology

Traffic psychology

Animal trainer

Sports coach

MAJOR EMPLOYERS OF PSYCHOLOGY GRADUATES INCLUDE:

- commercial and industrial companies
- financial organisations
- human resources departments
- local and national government
- marketing companies
- the media
- the NHS
- police forces, the National Probation Service and prisons
- schools, sixth form colleges and colleges of further education
- social services



the british
psychological society
promoting excellence in psychology

Thank you

Email: enquiries@parkstone.poole.sch.uk

Tel: 01202 605605

Web: www.parkstone.poole.sch.uk